

PIANO URBANISTICO ESECUTIVO " COSTA DEI CAFARI "

(L.reg. 27/07/2001 N.20)

DEI COMPARTI N. 78 E 79 DEL P.R.G. ADEGUATO ALLE DETERMINAZIONI REGIONALI DI CUI ALLA DELIB. DI G.R. N. 345 DEL 10.04.2001

PLANIMETRIA - TIPI EDILIZI

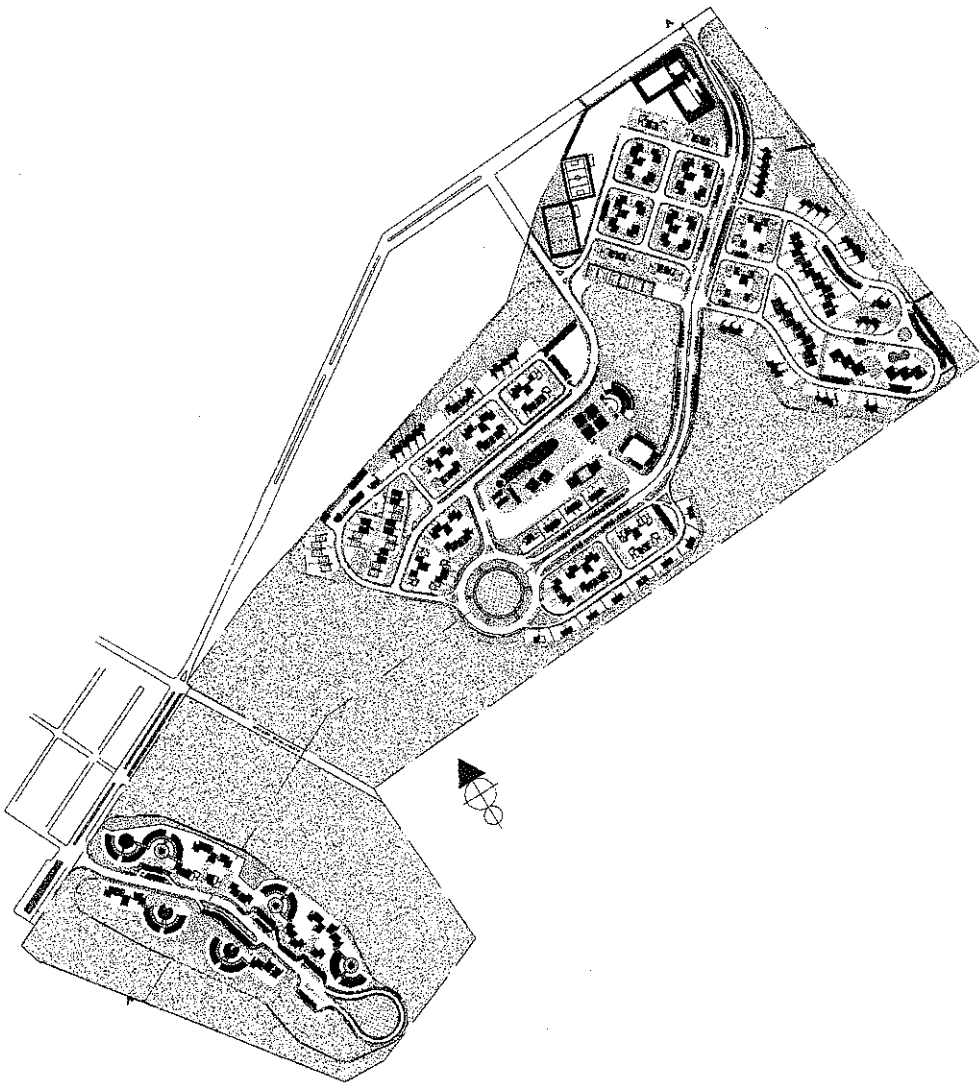
comparto

79

06

FEBBRAIO 2006

1:1000 - 1:200



PROPRIETA':

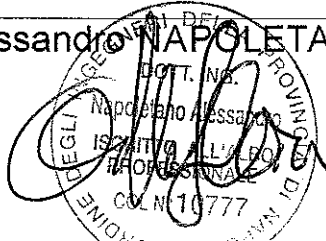
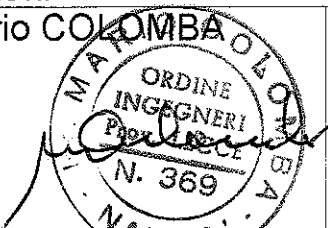
SO.CI.TUR. s.r.l. ed ALTRI

PROGETTISTI:

ing. Mario COLOMBA

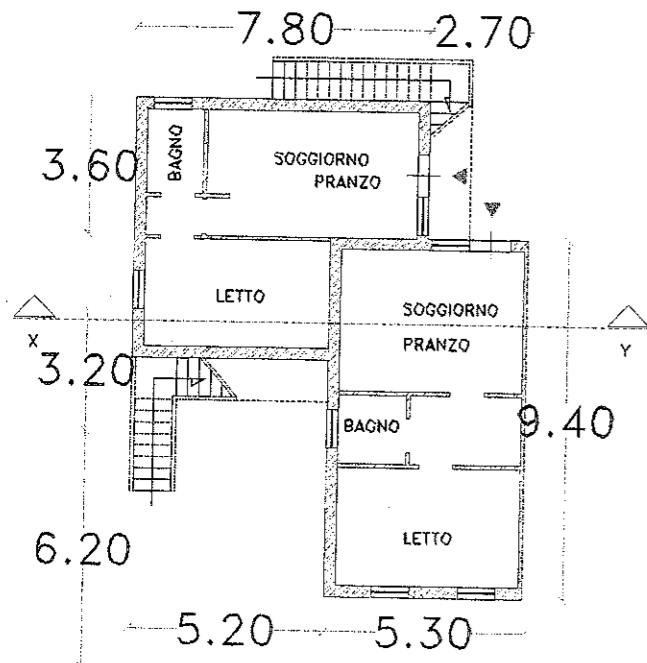
ing. Alessandro NAPOLETANO

ing. Pietro NAPOLETANO

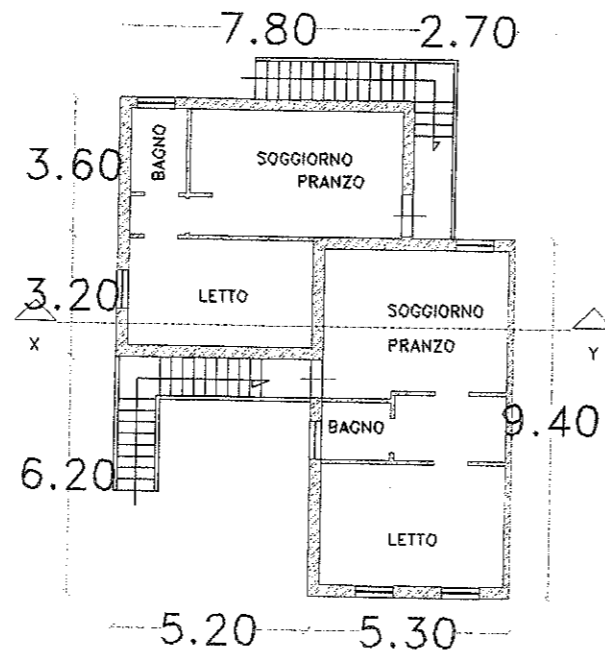


TIPOLOGIE CELLULE PER ALBERGHI R

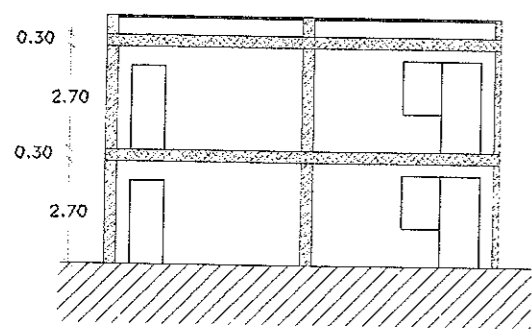
TIPO A



PIANTA PIANO TERRA



PIANTA PIANO PRIMO

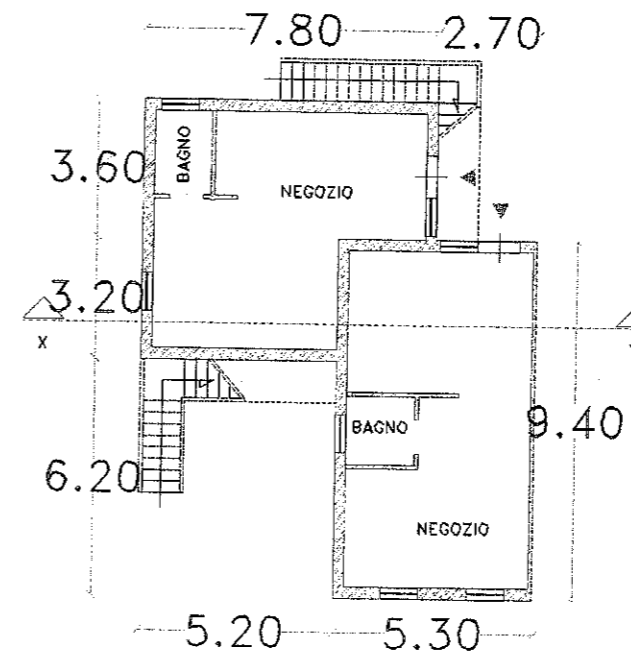


SEZIONE X-Y

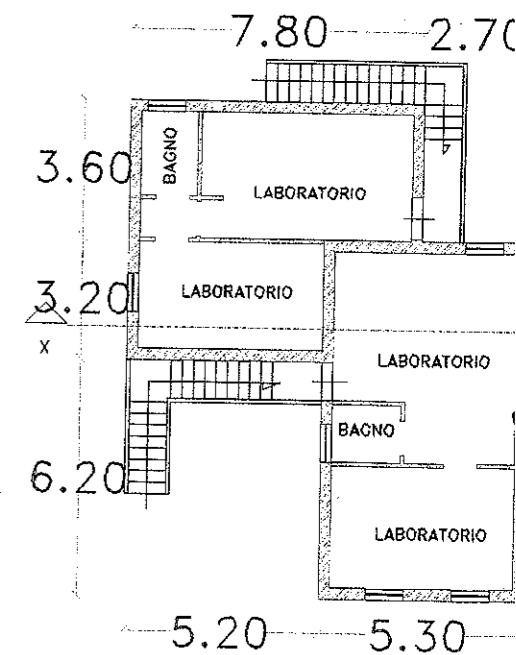
SUPERFICIE COPERTA: 94,54mq

VOLUME: 567,24mc

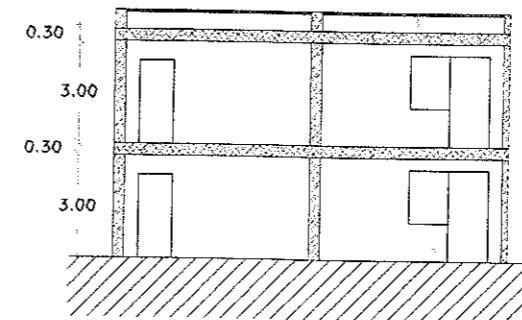
TIPO A'



PIANTA PIANO TERRA



PIANTA PIANO PRIMO

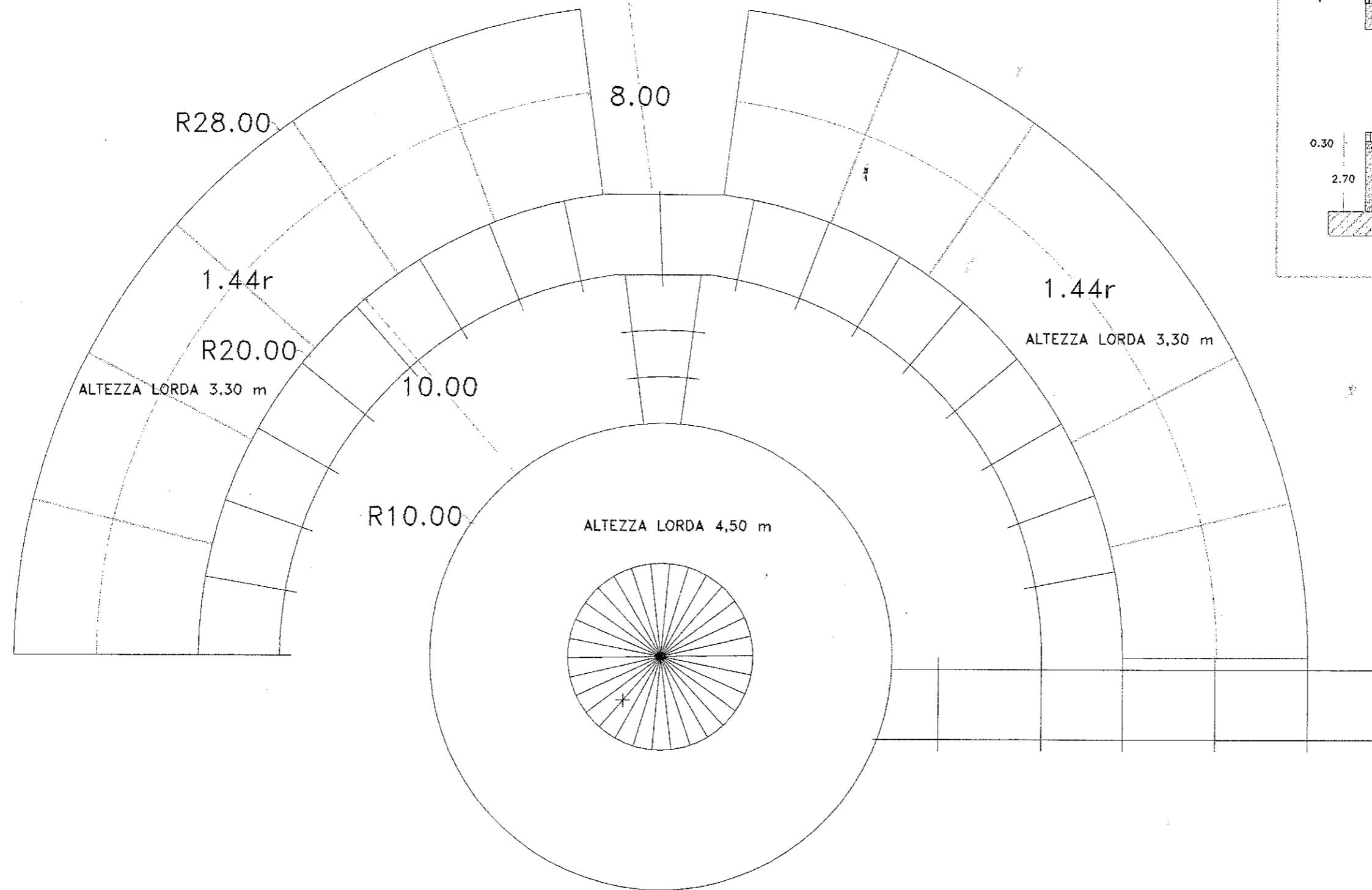


SEZIONE X-Y

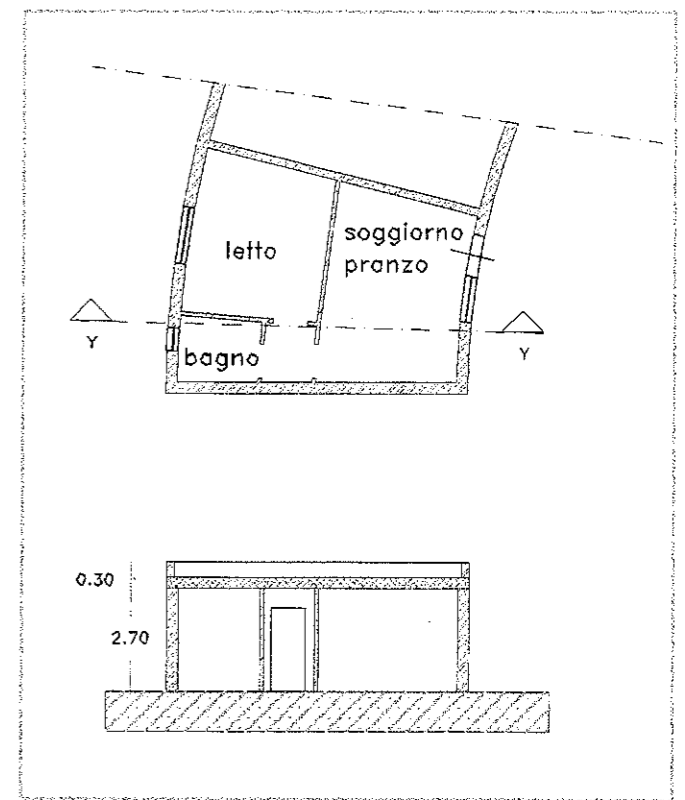
SUPERFICIE COPERTA: 94,

VOLUME: 623,96 mc

TIPO R



PIANTA PIANO TERRA



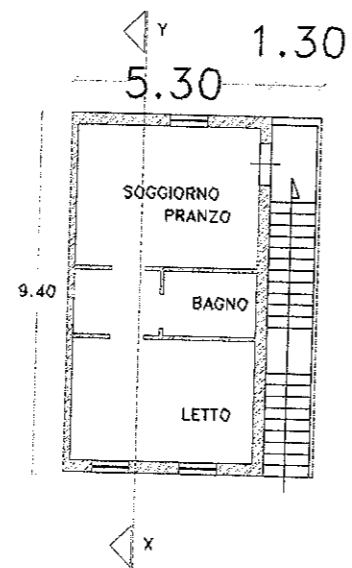
SUPERFICIE COPERTA: 866,96

VOLUME: 3.237,77mc

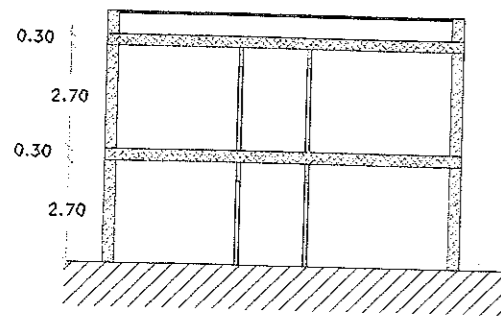
TIPO B



PIANTA PIANO TERRA



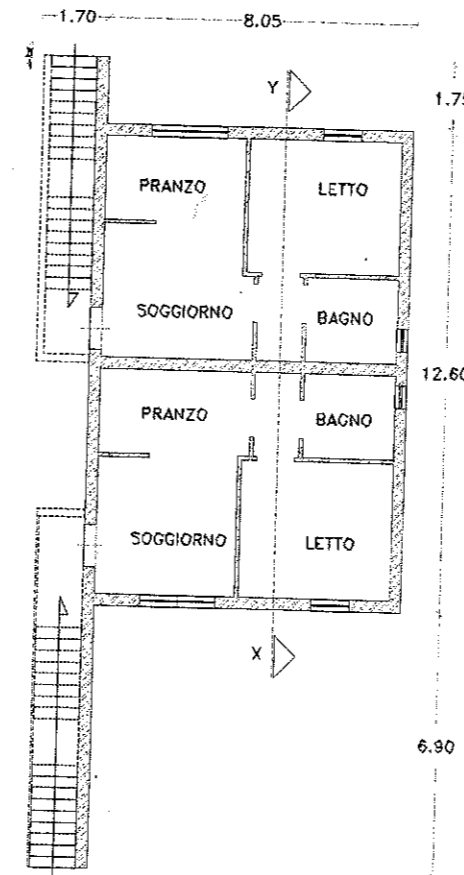
PIANTA PIANO PRIMO



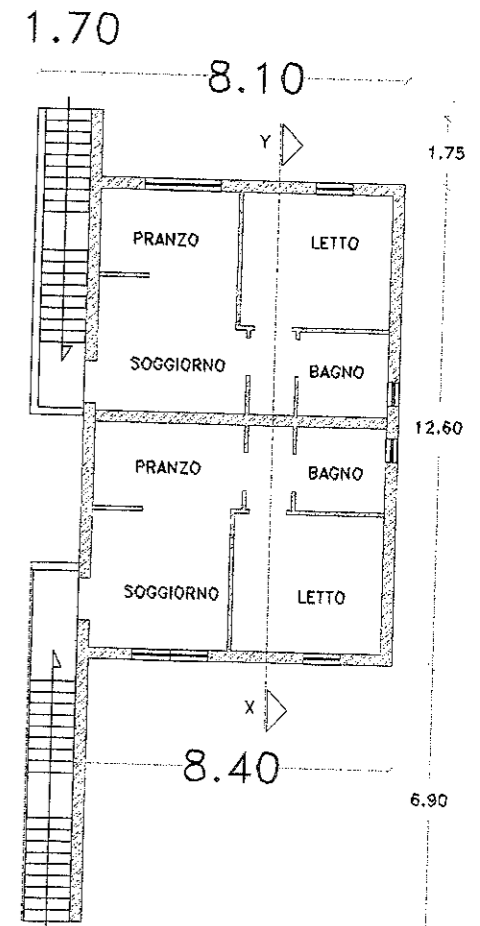
SEZIONE X-Y

SUPERFICIE COPERTA: 49,82mq
VOLUME: 298,92mc

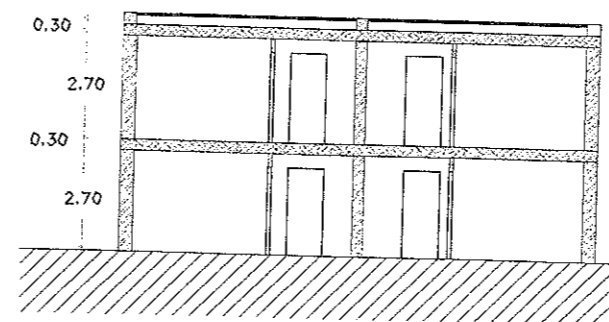
TIPO C



PIANTA PIANO TERRA

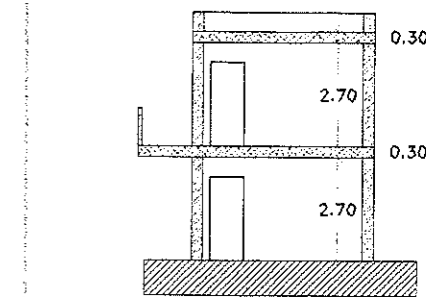
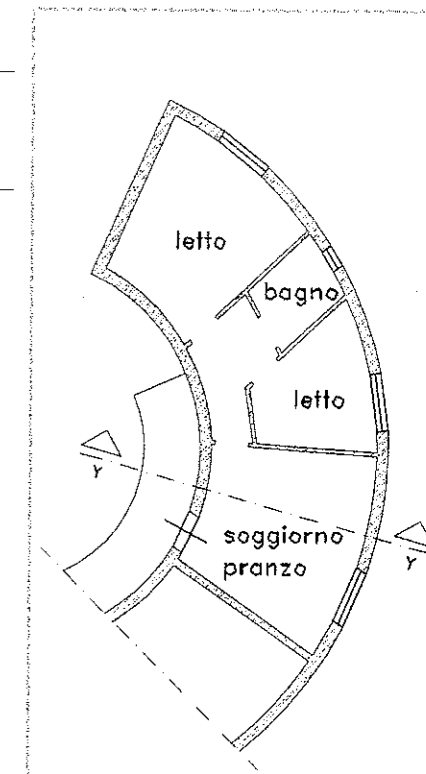
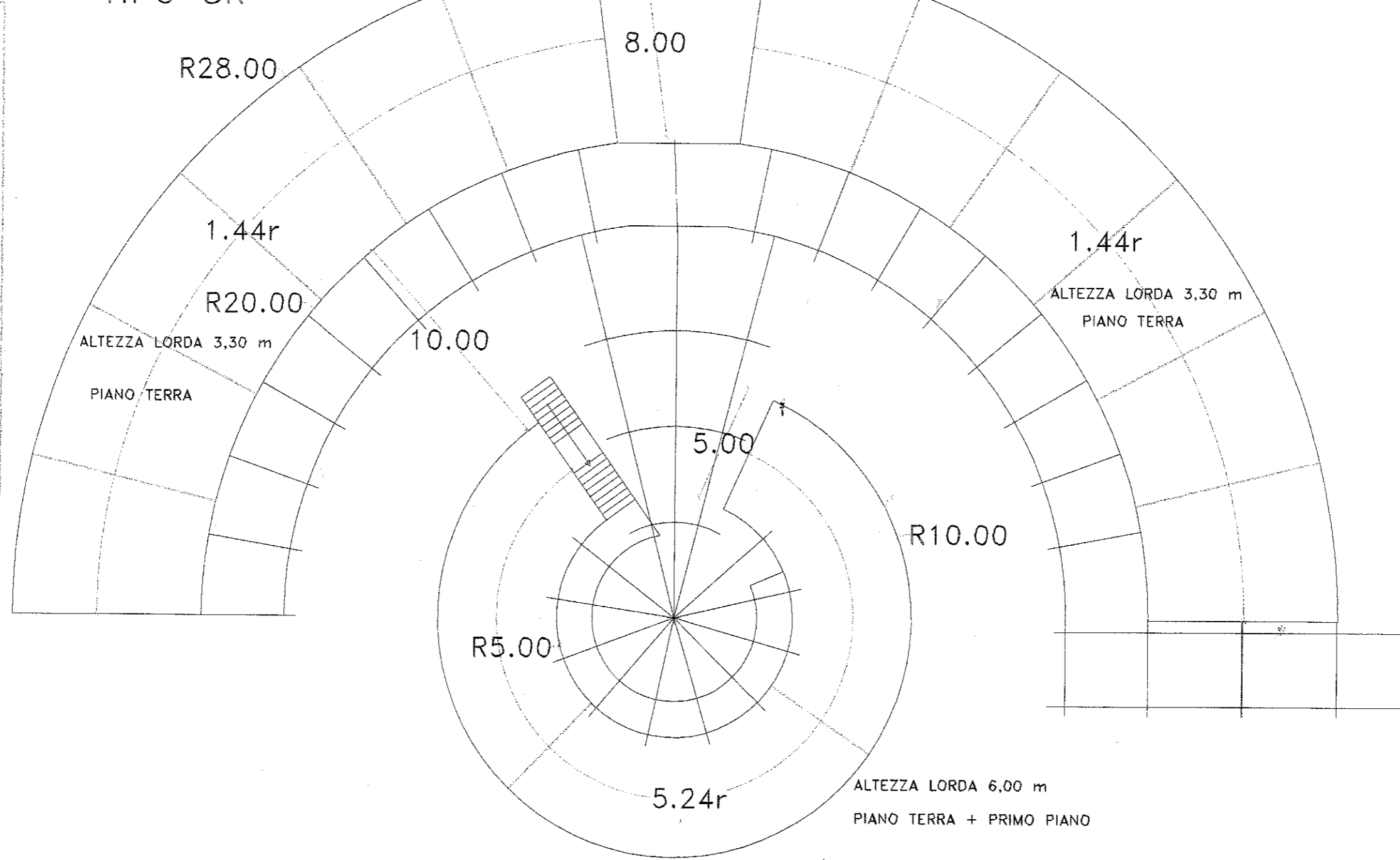
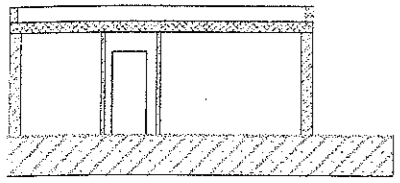
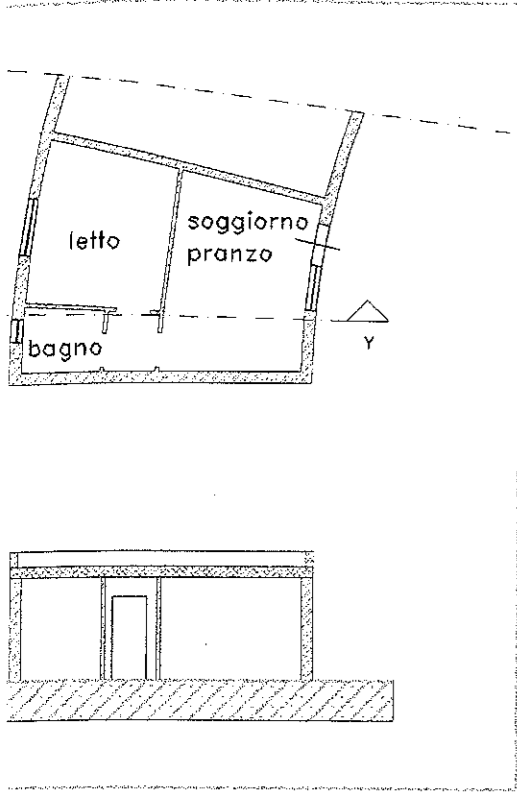


PIANTA PIANO PRIMO



SEZIONE X-Y

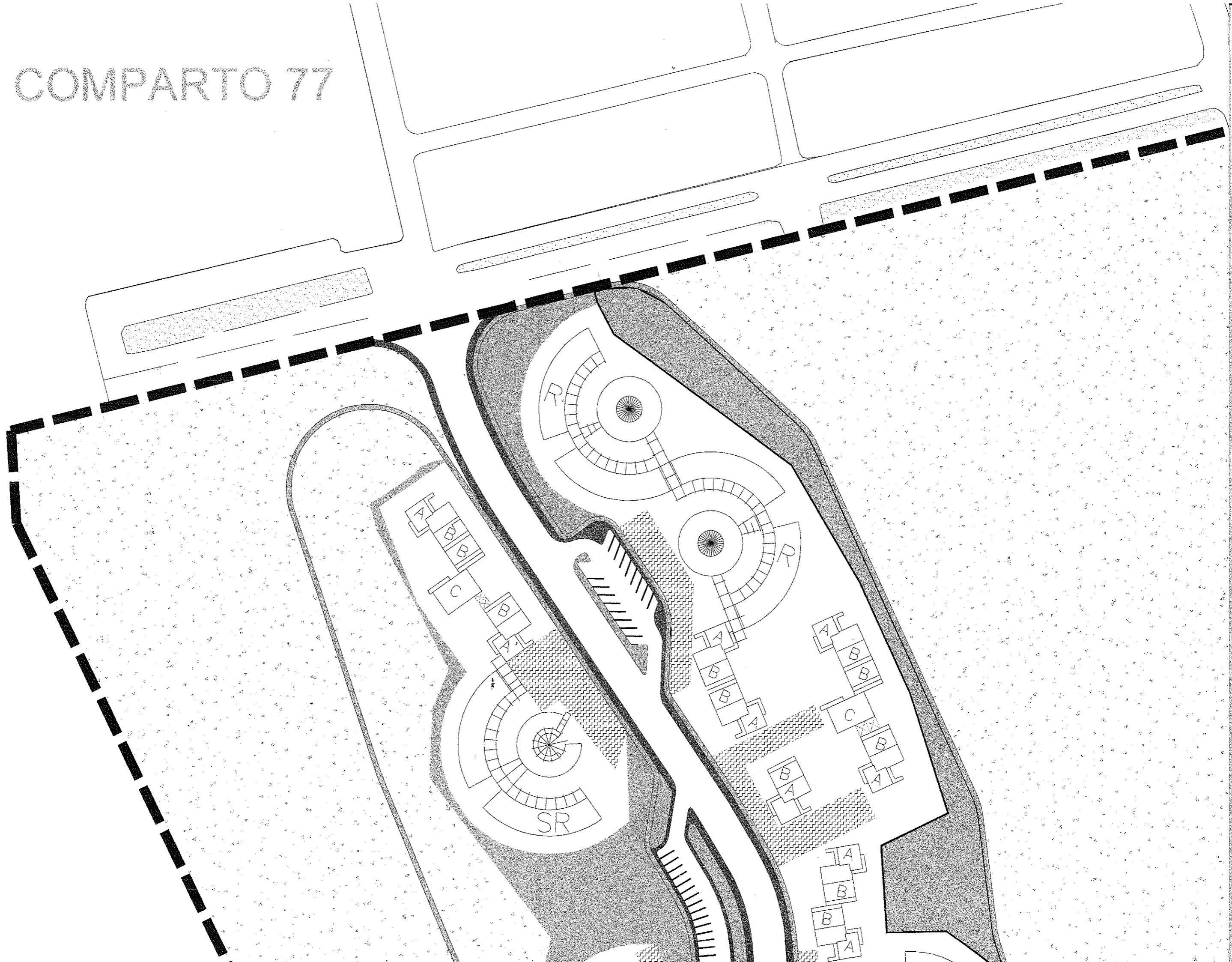
SUPERFICIE COPERTA: 105,84mq
VOLUME: 635,04mc

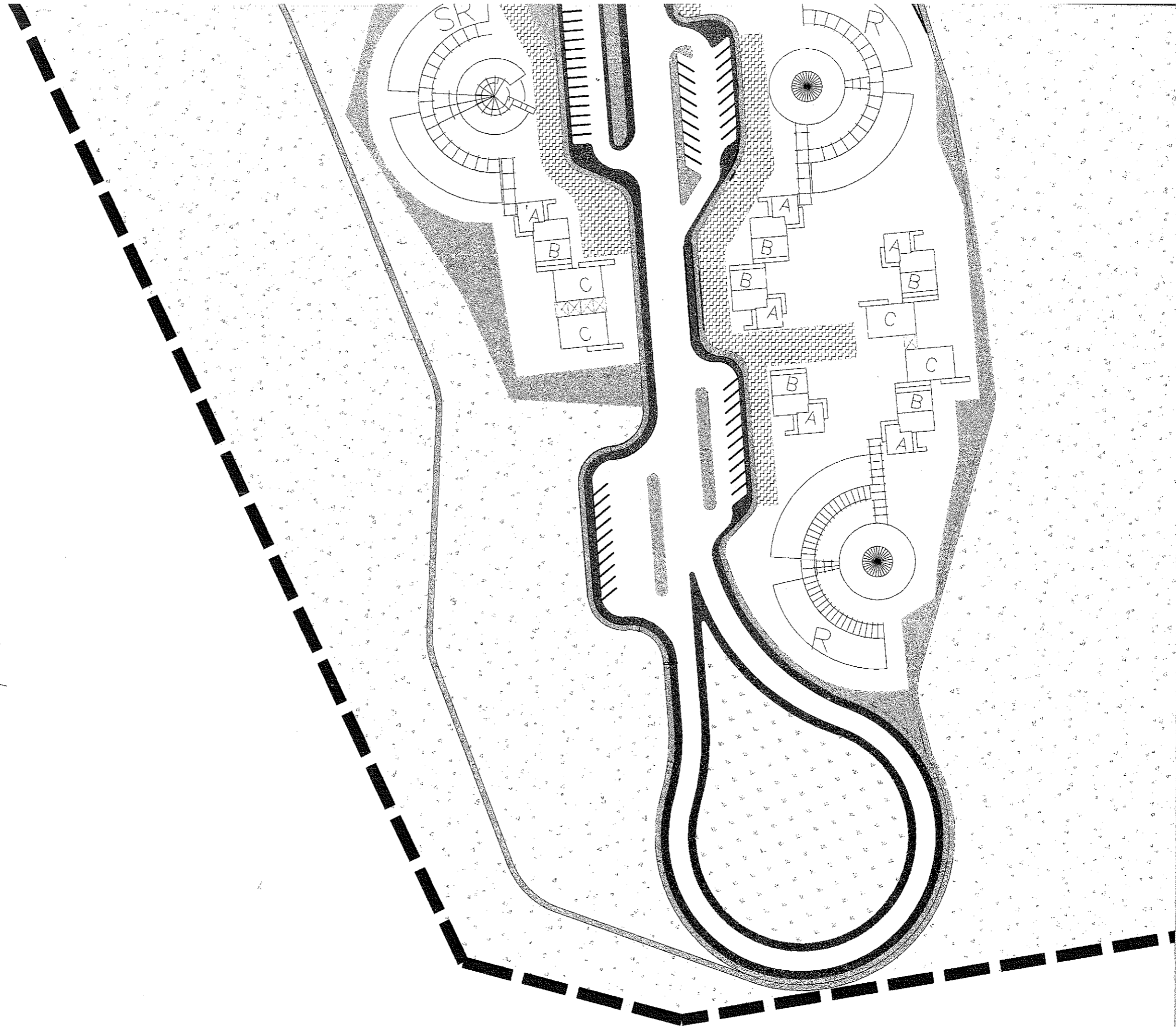
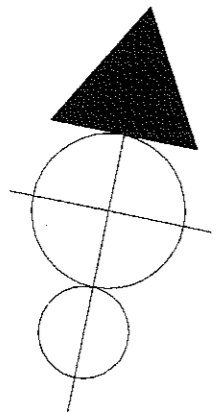


SUPERFICIE COPERTA: 749,46 mq

VOLUME: 3.003,77 mc

COMPARTO 77





DELIMITAZIONE DEL COMPARTO

VIABILITA' DI PRG REALIZZATA

F 34 - PARCO ATTREZZATO

F 14 - VERDE ATTREZZATO

VERDE PRIVATO

PARCHEGGI PUBBLICI

PARCHEGGI PERTINENZIALI DEI LOTTI AR ED ALC

VERDE DI ARREDO STRADALE

PIAZZALE

MARCIAPIEDE

PISTA CICLABILE

PARCHEGGI PRIVATI

PORTICATO

PERGOLATO

TABELLA TIPI EDILIZI - COMPARTO 79

TIPO	Sup. Coperta (mq)	Altezza (m)	Volume (mc)	
A	3,60 x 7,80 =	28,08	567,24	
	9,40 x 5,30 =	49,82		
	5,20 x 3,20 =	16,64		
	94,54	6,00		
A'	3,60 x 7,80 =	28,08	623,96	
	9,40 x 5,30 =	49,82		
	5,20 x 3,20 =	16,64		
	94,54	6,60		
B	9,40 x 5,30 =	49,82	6,00	298,92
C	12,60 x 8,40 =	105,84	6,00	635,04
R	(28,00x28,00 - 20,00x20,00)x1,44 =	552,96	3,30	1.824,77
	10,00 x 10,00 x 3,14 =	314,00	4,50	1.413,00
	866,96			3.237,77
SR	(28,00x28,00 - 20,00x20,00)x1,44 =	552,96	3,30	1.824,77
	(10,00x10,00 - 5,00x5,00)x5,24/2 =	196,50	6,00	1.179,00
	749,46			3.003,77